

The attached document was submitted to the **Washoe County Board of Commissioners** during the meeting

held on August 8, 2017

by Chief Hicks, Truckee Meadows Fire

for Agenda Item No. 25

and included here pursuant to NRS 241.020(7) as

amended by AB65 of the 2013 Legislative Session.

COMMISSIONER UPDATE 8-8-17

Prater Fire: Total acres burned was 2816 break down of acreage:

- TM Jurisdiction- 870 acres
- Sparks Jurisdiction-574 acres
- BLM Jurisdiction- 1372 acres

Canyon Fire: Total acres burned was 192 acres either Storey County Jurisdiction or BLM with TM assisting.

Washington Fire: South of the Canyon Fire in Storey County, unknown acreage, no assistance provided by TM. Both fires are contained.

Powerline Fire also in Storey County 30 acres no assistance provided by TM. Fire is contained.

Incandescent Fire: Palamino Valley area fire was contained by rain for a total of 14.75 acres, TM did respond however rain helped out.

Poslin Fire: North of Bordertown into CA, fire is about 800 acres, no TM resources however did receive numerous calls.

Chilicoot Fire: Near Chilicoot 1200 acres, no assistance from TM smoke very visible in the Cold Springs area.

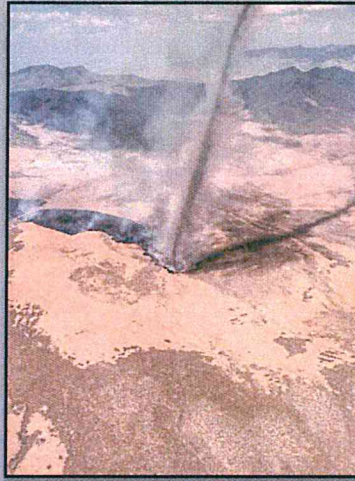
See attached Nevada Statistics to date on acres burned by jurisdiction, and human vs. lightning caused fires.

- BCC 8-8-17 #25
Chief Hicks - TM FIRE

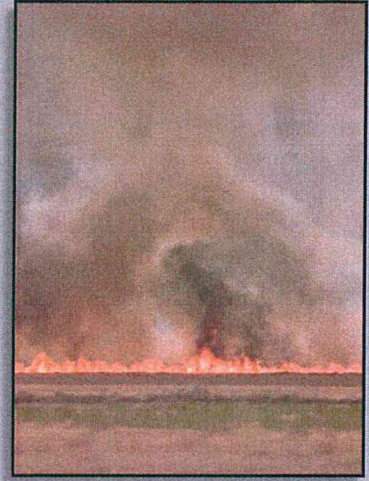
GREAT BASIN EXTREME FIRE BEHAVIOR INFORMATION



Moved 9 miles and 25,000 acres in one burn period.



Fire whirl lasted 4 hours in grass and brush.



Burned 100,000 acres in one day and moved 23 miles in two days.

The extraordinary grass fuel loading in Central and Northern Nevada, Northern and Western Utah, and Southern Idaho is continuous and very dry.

- ✓ As of the 1st of August, fires have burned more than two and half times the 10-year average in the Great Basin
- ✓ Fires are spreading rapidly. They can move faster than equipment can. **Ensure safety zones are adequate and available.**
- ✓ Fires are readily igniting through spotting: **Roads, rocky areas, and river bottoms i.e., natural barriers, may not stop fire spread.**
- ✓ Fires are burning with great intensity and have shown increasing resistance to control. **Watch your back.**
- ✓ Burn period is lasting longer (14 to 16 hours). **Fires are active later into the night and earlier in the morning.**
- ✓ Personnel observed fire burning in fuel types that typically do not burn, for example, desert scrub brush.

Make Safety Your First Priority.

Click or scan these QR codes to see past entrapments from the Wildfire Lessons Learned Center:



[Devil's Den Fire](#)



[New York Peak](#)



[Sadler Fire](#)



[Scorpio Fire](#)



[Waterfall Fire](#)

Video Clips 2017 Extreme Fire Behavior: <https://youtu.be/JvuxDIA4phs> https://youtu.be/uw35_8QhwLU

The attached document was submitted to the **Washoe County Board of Commissioners** during the meeting

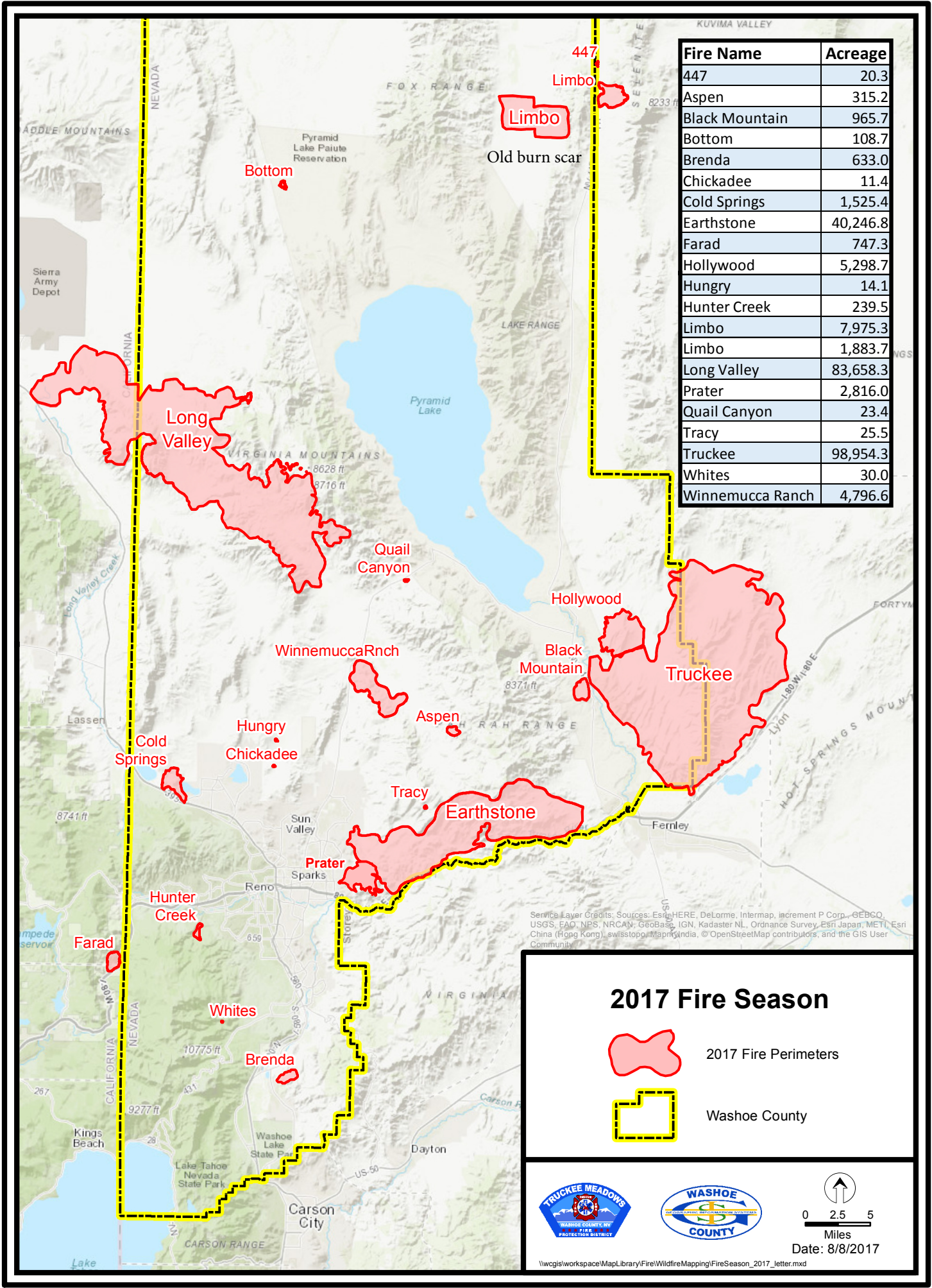
held on AUGUST 8, 2017

by SAM HICKS

for Agenda Item No. 25

and included here pursuant to NRS 241.020(7) as

amended by AB65 of the 2013 Legislative Session.



Fire Name	Acreage
447	20.3
Aspen	315.2
Black Mountain	965.7
Bottom	108.7
Brenda	633.0
Chickadee	11.4
Cold Springs	1,525.4
Earthstone	40,246.8
Farad	747.3
Hollywood	5,298.7
Hungry	14.1
Hunter Creek	239.5
Limbo	7,975.3
Limbo	1,883.7
Long Valley	83,658.3
Prater	2,816.0
Quail Canyon	23.4
Tracy	25.5
Truckee	98,954.3
Whites	30.0
Winnemucca Ranch	4,796.6

Service Layer Credits: Sources: Esri, HERE, DeLorme, Intermap, increment P Corp., GEBCO, USGS, FAO, NPS, NRCAN, GeoBase, IGN, Kadaster NL, Ordnance Survey, Esri Japan, METI, Esri China (Hong Kong), swisstopo, Mapbox India, © OpenStreetMap contributors, and the GIS User Community

2017 Fire Season



2017 Fire Perimeters



Washoe County







0 2.5 5
Miles

Date: 8/8/2017

\\wgis\workspace\MapLibrary\Fire\WildfireMapping\FireSeason_2017_letter.mxd